

NINJA®

BN650UK

INSTRUCTIONS

FOOD PROCESSOR WITH AUTO-IQ®



THANK YOU

for purchasing the Ninja® Food Processor with Auto-iQ®



REGISTER YOUR PURCHASE

 ninjakitchen.co.uk/register-guarantee

 Scan QR code using mobile device

RECORD THIS INFORMATION

Model Number: _____

Serial Number: _____

Date of Purchase: _____
(Keep receipt)

Store of Purchase: _____

TECHNICAL SPECIFICATIONS

Voltage: 220-240V~, 50-60Hz
Power: 850 Watts

**PLEASE READ CAREFULLY AND
KEEP FOR FUTURE REFERENCE.**

TIP: You can find the model and serial numbers on the QR code label on the back of the unit by the power cord.

CONTENTS

Important Safety Instructions	4
Parts	7
Before First Use	8
Features	8
Auto-iQ® Programs for the Food Processor Bowl.....	8
Manual Programs	8
Using the Food Processor Bowl	9
Using the Slicing/Grating Disc	11
Care & Maintenance	13
Cleaning	13
Storing.....	13
Resetting the Motor Thermostat.....	13
Ordering Replacement Parts	13
Troubleshooting Guide	14

PRODUCT REGISTRATION

Please visit ninjakitchen.co.uk to register your new Ninja® product within 28 days of purchase. You will be asked to provide the store name, date of purchase, and model number along with your name and address.

The registration will enable us to contact you in the unlikely event of a product safety notification.

IMPORTANT SAFETY INSTRUCTIONS

PLEASE READ CAREFULLY BEFORE USE • FOR HOUSEHOLD USE ONLY

⚠ WARNING

To reduce the risk of injury, fire, electrical shock or property damage, basic safety precautions must always be followed, including the following numbered warnings and subsequent instructions. Do not use appliance for other than intended use.

- 1 Read all instructions prior to using the appliance and its accessories.
- 2 Carefully observe and follow all warnings and instructions. This unit contains electrical connections and moving parts that potentially present risk to the user.
- 3 Take your time and exercise care during unpacking and appliance setup. This appliance contains sharp, loose blades that can cause injury if mishandled.
- 4 Take inventory of all contents to ensure you have all parts needed to properly and safely operate your appliance.
- 5 Blades are sharp. Handle carefully.
- 6 This product is provided with a Chopping Blade Assembly. **ALWAYS** exercise care when handling blade assembly. The blade assembly is sharp and is **NOT** locked in place in the container. The blade assembly is designed to be removable to facilitate cleaning and replacement if needed. **ONLY** grasp the blade assembly by the top of the shaft. Failure to use care when handling the blade assembly will result in a risk of laceration.
- 7 Turn the appliance **OFF**, then unplug the appliance from the socket when not in use, before assembling or disassembling parts, and before cleaning. To unplug, grasp the plug by the body and pull from the socket. **NEVER** unplug by grasping and pulling the flexible cord.
- 8 Before use, wash all parts that may contact food. Follow washing instructions covered in this instruction manual.
- 9 Before each use, inspect blade assemblies for damage. If a blade is bent or damage is suspected, contact SharkNinja to arrange for replacement.
- 10 **DO NOT** use this appliance outdoors. It is designed for indoor household use only.
- 11 **DO NOT** operate any appliance with a damaged cord or plug, or after the appliance malfunctions or is dropped or damaged in any manner. This appliance has no user-serviceable parts. If damaged, contact SharkNinja for servicing.
- 12 This appliance has important markings on the plug blade. The entire supply cord is not suitable for replacement. If damaged, please contact SharkNinja for service.
- 13 Extension cords should **NOT** be used with this appliance.
- 14 To protect against the risk of electric shock, **DO NOT** submerge the appliance or allow the power cord to contact any form of liquid.
- 15 **DO NOT** allow the cord to hang over the edges of tables or worktops. The cord may become snagged and pull the appliance off the work surface.
- 16 **DO NOT** allow the unit or the cord to contact hot surfaces, including stoves and other heating appliances.
- 17 **ALWAYS** use the appliance on a dry and level surface.
- 18 **DO NOT** allow children to operate this appliance or use as a toy. Close supervision is necessary when any appliance is used near children. Keep the appliance and its cord out of reach of children.
- 19 This appliance is **NOT** intended to be used by people with reduced physical, sensory, or mental capabilities, or lack of experience and knowledge, unless they have been given supervision or instruction concerning use of the appliance by a person responsible for their safety.
- 20 **ONLY** use attachments and accessories that are provided with the product or are recommended by SharkNinja. The use of attachments, including canning jars, not recommended or sold by SharkNinja may cause fire, electric shock, or injury.
- 21 **NEVER** place a blade assembly on the motor base without it first being attached to its corresponding container (bowl) and lid.
- 22 Keep hands, hair, and clothing out of the container when loading and operating.
- 23 During operation and handling of the appliance, avoid contact with moving parts.
- 24 **DO NOT** fill containers past the **MAX FILL** or **MAX LIQUID** lines.
- 25 **DO NOT** operate the appliance with an empty container.
- 26 **DO NOT** microwave any containers or accessories provided with the appliance.
- 27 **NEVER** leave the appliance unattended while in use.
- 28 **DO NOT** blend hot liquids. Doing so may result in pressure buildup and steam exposure that can pose a risk of the user being burned.
- 29 **DO NOT** process dry ingredients with the Chopping Blade Assembly.
- 30 To reduce the risk of injury, never place cutting blade or discs on base without first putting bowl properly in place.
- 31 **DO NOT** perform grinding operations with the Chopping Blade Assembly.
- 32 **NEVER** operate the appliance without lids and caps in place. **DO NOT** attempt to defeat the interlock mechanism. Ensure the container and lid are properly installed before operation.
- 33 Before operation, ensure all utensils are removed from containers. Failure to remove utensils can cause containers to shatter and potentially result in personal injury and property damage.

SAVE THESE INSTRUCTIONS

IMPORTANT SAFETY INSTRUCTIONS

PLEASE READ CAREFULLY BEFORE USE • FOR HOUSEHOLD USE ONLY

⚠ WARNING

To reduce the risk of injury, fire, electrical shock or property damage, basic safety precautions must always be followed, including the following numbered warnings and subsequent instructions. Do not use appliance for other than intended use.

- 34** Keep hands and utensils out of containers while chopping to reduce the risk of severe personal injury or damage to the blender/food chopper. A scraper may be used **ONLY** when the processor is not running. When using the processor, always use food pusher to add food. **NEVER** add food by hand.
- 35** **DO NOT** attempt to remove the container or lid from the motor base while the blade assembly is still spinning. Allow the appliance to come to a complete stop before removing lids and containers.
- 36** If the appliance overheats, a thermal switch will activate and temporarily disable the motor. To reset, unplug the appliance and allow it to cool for approximately 30 minutes before using again.
- 37** **DO NOT** expose the containers and accessories to extreme temperature changes. They may experience damage.
- 38** Upon completion of processing, ensure that the blade assembly is removed **BEFORE** emptying container's contents. Remove the blade assembly by carefully grasping the top of the shaft and lifting it from the container. Failure to remove the blade assembly before emptying the container results in a risk of laceration.
- 39** The maximum wattage rating for this appliance is based on the configuration of the Food Processor Bowl. Other configurations may draw less power or current.
- 40** **DO NOT** submerge the motor base or control panel in water or other liquids. **DO NOT** spray motor base or control panel with any liquid.
- 41** **DO NOT** attempt to sharpen blades.
- 42** Turn off the appliance and unplug the motor base before cleaning.

SAVE THESE INSTRUCTIONS

PARTS

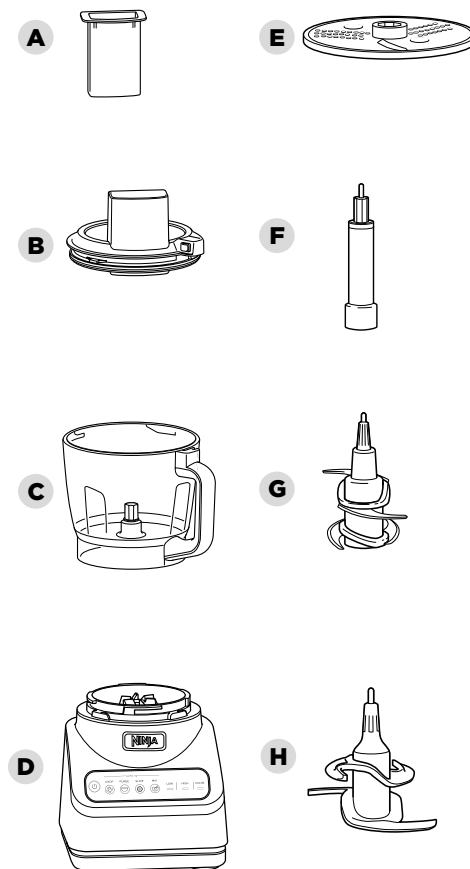
There are a variety of accessories that are compatible with this food processor series.

NOTE: The top flap of your box shows the select accessories that are included with your model.

To purchase more accessories, visit ninjakitchen.co.uk.

PARTS

- A** Pusher for Feed Chute Lid
- B** Feed Chute Lid
- C** 2.1L Food Processor Bowl
- D** Motor Base
(attached power cord not shown)
- E** Reversible Slicing/Grating Disc
- F** Disc Adapter
- G** Chopping Blade Assembly
- H** Dough Blade Assembly




BEFORE FIRST USE

IMPORTANT: Review all warnings on pages 4-6 before proceeding.

NOTE: All attachments are BPA free and dishwasher safe. It is recommended that the bowl, lid, disc, and blade assemblies be placed on the top rack of the dishwasher. Exercise care when handling blade assemblies.

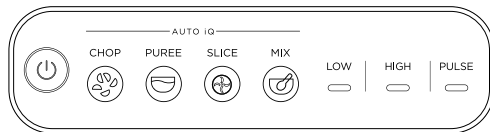
- 1 Remove all packaging materials from the appliance. Exercise care when unpacking blade assemblies. All blade assemblies are sharp.
- 2 The Chopping Blade Assembly is **NOT** locked in place in the bowl. Handle the Chopping Blade Assembly by grasping the top of the shaft.
- 3 Wash bowl, lid, disc, and blade assemblies in warm, soapy, water using a dishwashing utensil with a handle to avoid direct contact with the blades. Exercise care when handling blade assemblies, as the blades are sharp.
- 4 Thoroughly rinse and air-dry all parts.
- 5 Wipe control panel with a soft cloth. Allow it to dry completely before using.

FEATURES

 The Power button should be used to turn the unit on or off.

AUTO-iQ®

Intelligent preset programs combine unique processing and pausing patterns that do the work for you. Once an Auto-iQ® program is selected, it will start immediately and automatically stop when processing is complete. To stop processing before the end of a program, press the currently active button again.



Auto-iQ® PROGRAMS

CHOP

Timed pulses and pauses give you consistent chopping results. Run program once for a large chop, twice for a small chop and three times if you prefer it even finer.

PUREE

Create anything from silky-smooth sauces to the perfect hummus.

SLICE

Use with the reversible disc shaped blade to quickly slice or grate cheese and vegetables with minimal effort.

MIX

Quickly mix together doughs and batters for pizzas, bread, pastry and cakes.

MANUAL PROGRAMS

LOW and HIGH

When selected, each of these speeds runs continuously until turned off. They do not work in conjunction with any preset Auto-iQ® programs.

PULSE

Offers greater control of pulsing and processing. Operates only when PULSE is pressed. Use short presses for short pulses and long presses for long pulses.

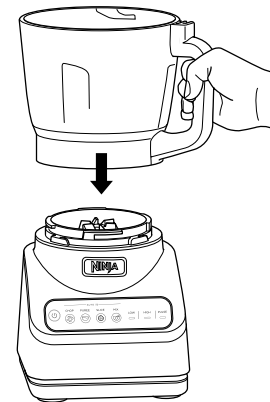
USING THE FOOD PROCESSOR BOWL

IMPORTANT: As a safety feature, if the blade assembly is not fully seated, you will not be able to install and lock the lid in position.

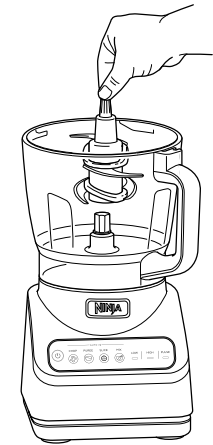
NOTE: DO NOT add ingredients before completing installation of the blade assembly.

NOTE: Please follow the same instructions to install the Dough Blade Assembly.

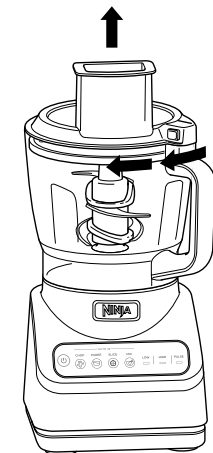
- 1 Place motor base on a clean, dry, level surface such as a worktop or table.



- 2 Lower the Food Processor Bowl onto the motor base and rotate clockwise until it clicks into place.

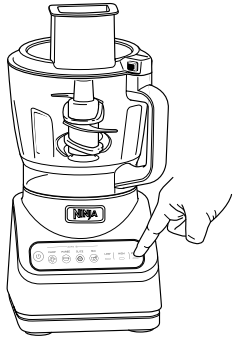


- 3 Exercising care, grasp the Chopping Blade Assembly by the top of the shaft and place it onto the drive gear inside the bowl. Note that the Chopping Blade Assembly will fit loosely on the drive gear.
- 4 Add ingredients to the bowl, making sure not to exceed the MAX FILL line.



- 5 Place the feed chute lid on the bowl and turn clockwise until you hear a click, indicating the lid is locked in place. The control panel will stop flashing, indicating the bowl and lid are properly assembled.

USING THE FOOD PROCESSOR BOWL - CON'T

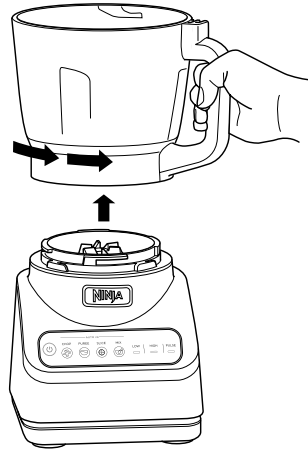


6a Plug in the unit, then press the Power button to turn it on. If using an Auto-iQ® program, first select the program that best suits your recipe. The preset feature will automatically stop the unit at the end of the program. To stop the unit at any time, press the currently active program again.

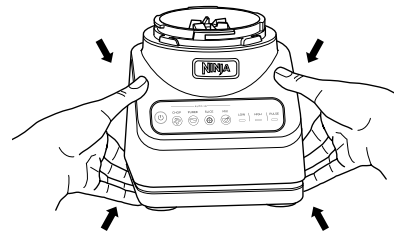
6b If not using an Auto-iQ® program, select one of the manual programs. Once the ingredients have reached your desired consistency, press the active button again, and wait for the unit to come to a complete stop.



7 When finished, press the button on the feed chute lid near the handle to unlock, then turn the lid anti-clockwise. Lift the lid from the bowl. Always remove the Chopping Blade Assembly before emptying the ingredients from the bowl. To remove the Chopping Blade Assembly, carefully grasp it by the top of the shaft and lift it out of the bowl.



8 To remove the bowl from the motor base, turn the bowl anti-clockwise and then lift it.



9 Press the Power button to turn the unit off, then unplug the unit. Refer to the Care & Maintenance section for cleaning and storage instructions.

USING THE SLICING/GRATING DISC

IMPORTANT: Review all warnings on pages 4-6 before proceeding.

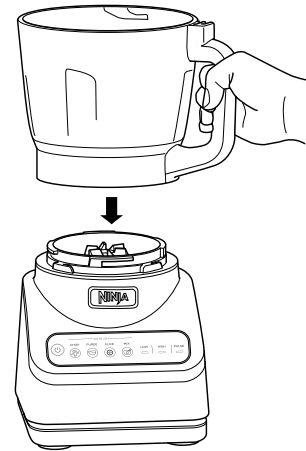
IMPORTANT: Use the SLICE or LOW setting when using the Slicing/Grating Disc.

IMPORTANT: If the control panel is flashing, this means the lid is not locked in place correctly. Review the steps 2-4 to ensure you are installing the disc adapter, ingredients, disc and lid correctly.

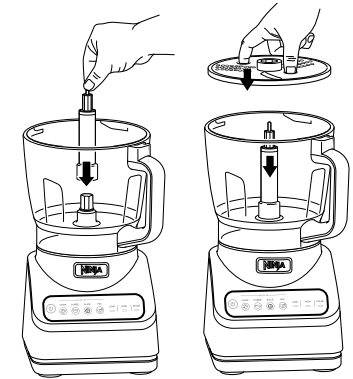
NOTE: The feed chute lid features a pusher to guide food through the chute.

NOTE: The Slicing/Grating Disc is reversible. Use the side labeled "Slicer" for slicing. Carefully flip the disc over to the side labeled "Shredder" for grating.

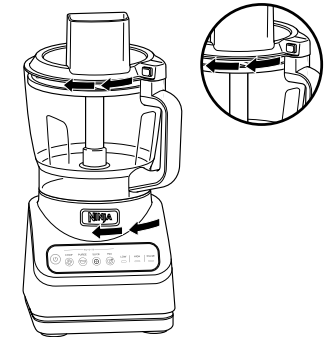
1 Place motor base on a clean, dry, level surface such as a countertop or table, then plug in the unit.



2 Lower the Food Processor Bowl onto the motor base and rotate clockwise until it clicks into place.



3 Place the disc adapter onto the drive gear inside the bowl. Then, use the finger holes to grasp the reversible slicing/grating disc and place it over the adapter, with the side you would like to use facing up.



4 Place the feed chute lid on the bowl and turn clockwise until you hear a click, indicating the lid is locked in place. The control panel will stop flashing, indicating the bowl and lid are properly assembled.

USING THE SLICING/GRATING DISC - CON'T



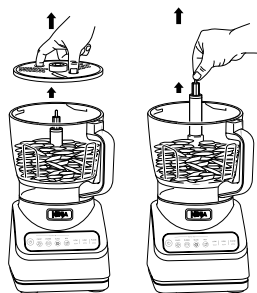
- 5** Press the Power button to turn on, then select SLICE or LOW. Add the prepped ingredients you want to slice or grate through the feed chute on the lid. Use the food pusher to help guide the ingredients through the feed chute.



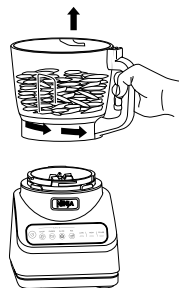
- 6** If using the Auto-iQ® program, the SLICE disc will automatically stop spinning at the end of the program. If using the manual program LOW press the button again wait for the unit to come to a complete stop.



- 7** To remove the lid, press the button on the feed chute lid near the handle to unlock, then turn the lid anti-clockwise. Lift the lid from the bowl.



- 8** Using the finger holes, carefully lift the disc out of the bowl. Then, grasp the adapter by the top of the shaft and lift it out of the bowl.



- 9** To remove the bowl from the motor base, turn the bowl anti-clockwise and then lift it up.

- 10** Press the Power button to turn the unit off, then unplug the unit. Refer to the Care & Maintenance section for cleaning and storage instructions.

CARE & MAINTENANCE

CLEANING

Separate all parts. Wash bowl in warm, soapy water with a soft cloth.

• Hand-Washing

Wash bowl, lid, disc and blade assemblies in warm, soapy water. When washing the blade assemblies, use a dishwashing utensil with a handle to avoid direct hand contact with blades.

Handle blade assemblies with care to avoid contact with sharp edges. Rinse and air-dry thoroughly.

• Dishwasher

All attachments are dishwasher safe. It is recommended that the bowl, lid, disc and blade assemblies be placed on the top rack of the dishwasher **ONLY**. Ensure the blade assembly is removed from the bowl before placing in the dishwasher. Exercise care when handling blade assemblies.

• Motor Base

Turn off the unit and unplug the motor base before cleaning. Wipe motor base with a clean, damp cloth.

DO NOT use abrasive cloths, pads, or brushes to clean the base.

STORING

Wrap the power cord around the cord wrap on the back of the motor base. Store the unit upright and store all blade assemblies inside or attached to the bowl with the lid locked in place.

DO NOT stack items on top of the containers. Store any remaining attachments alongside the unit or in a cabinet where they will not be damaged or create a hazard.

RESETTING THE MOTOR THERMOSTAT

This unit features a unique safety system that prevents damage to the motor and drive system should you inadvertently overload the unit. If the unit is overloaded, the motor will be temporarily disabled. Should this occur, follow the reset procedure below.

- 1** Unplug the unit from the socket.
- 2** Allow the unit to cool for approximately 30 minutes.
- 3** Remove the bowl's lid and blade assembly. Empty the bowl and ensure no ingredients are jamming the blade assembly.

IMPORTANT: Ensure that maximum capacities are not exceeded. This is the most typical cause of appliance overload.

ORDERING REPLACEMENT PARTS

To order additional parts and attachments, visit ninjakitchen.co.uk

⚠ WARNING: To reduce the risk of shock and unintended operation, turn power off and unplug unit before troubleshooting.

Flashing lights on the control panel.

- The feed chute lid and processor bowl are not properly installed on the motor base. Remove the bowl and reinstall it by lowering it onto the motor base and rotating it clockwise until it clicks into place. If the control panel lights are still flashing, remove the feed chute lid and reinstall it. Turn the lid clockwise until it clicks securely into place. The lights will stop flashing when the bowl and lid are both installed correctly.

Motor base won't stick to worktop or tabletop.

- Make sure surface and suction feet are wiped clean. Suction feet will only stick to smooth surfaces.
- Suction feet will not stick to some surfaces such as wood, tile, and non-polished finishes.
- **DO NOT** attempt to use unit when the motor base is stuck to a surface that is not secure (chopping board, platter, plates, etc.).

Unit is difficult to remove from worktop for storage.

- Place your hands underneath both sides of the motor base and gently pull the unit up and toward you.

Food is not evenly chopped.

- For best results when chopping, cut pieces of ingredients in a uniform size and don't overfill the bowl.

Ingredients are unevenly sliced.

- For best results when using the reversible slicing/grating disc, trim ingredients to a uniform size to they fit better through the feed chute. Do not cut ingredients smaller than the feed chute height.

VISIT US ONLINE AT:

ninjakitchen.co.uk

Or follow us on any of our social media pages:



@ninjakitchenuk



NOTE: Save these instructions. Keep for future reference.



This marking indicates this product should not be disposed of with other household waste. To prevent possible harm to the environment or human health from uncontrolled waste disposal, recycle it responsibly to promote the sustainable reuse of material sources. To return your used device, please use the return and collection systems or contact the retailer where this product was purchased. They can take this product for environmentally safe recycling.

SharkNinja Europe Limited
3150 Century Way
Thorpe Park
Leeds
LS15 8ZB
UK
ninjakitchen.co.uk

SharkNinja Germany GmbH,
c/o Regus Management GmbH
Excellent Business Center 10
+11/Stock Westhafenplatz 1
60327 Frankfurt am Main,
Germany

Illustrations may differ from actual product. We are constantly striving to improve our products, therefore the specifications contained herein are subject to change without notice.

AUTO-IQ and NINJA are registered trademarks of SharkNinja Operating LLC.

© 2021 SharkNinja Operating LLC

PRINTED IN CHINA

BN650UK_30_IB_MP_210622_Mv1

